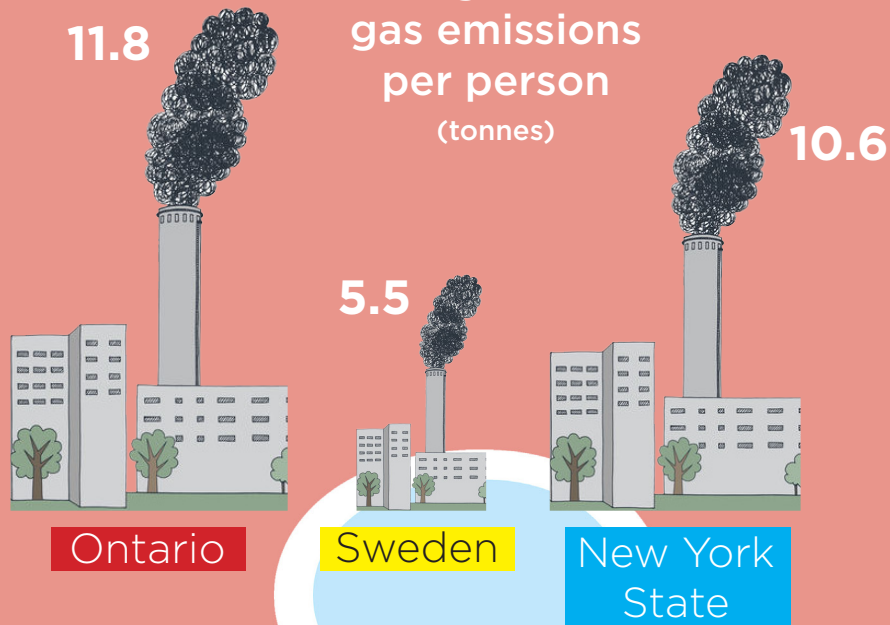


Annual greenhouse gas emissions per person (tonnes)



Energy use per person (gigajoules)



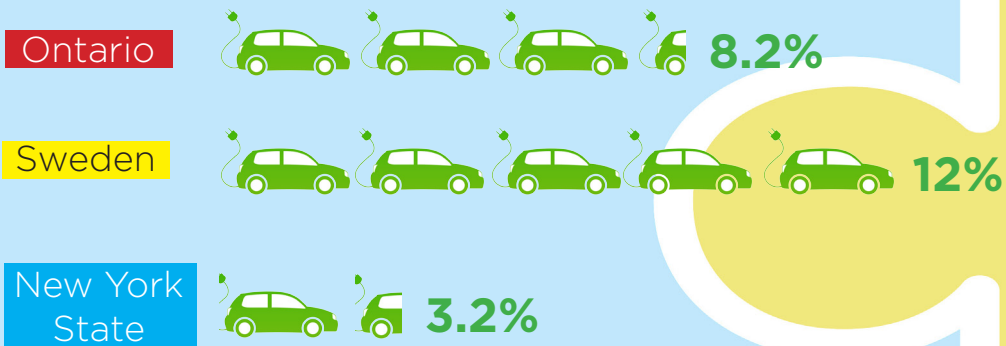
Solving the climate puzzle: The Swedish example

Despite a similar economy and climate, Ontario lags far behind Sweden, and even behind neighbouring New York State, in reducing greenhouse gas emissions.

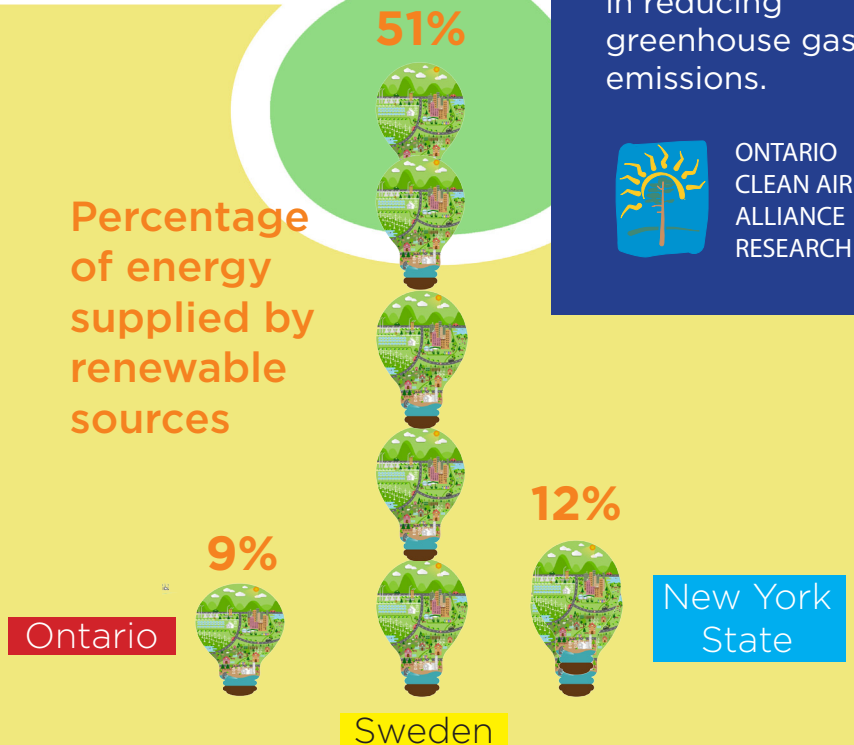


ONTARIO
CLEAN AIR
ALLIANCE
RESEARCH

Percentage of new passenger cars sold that are electric



Percentage of energy supplied by renewable sources



Like Ontario, much of Sweden's population is concentrated in the country's south. Stockholm has an average winter temperature that is 0.6 degrees C colder than Toronto's, yet Sweden uses 38% less energy per person than Ontario.